

**THE SMART WAY®**  
AFETY | INNOVATION | PLANNING | PROCESS | EXPERTISE

# Petrochemical & Refining Solutions

## Access, Insulation & Coatings



**For Maintenance,  
Turnarounds,  
Capital Work &  
Emergencies**



Cat crackers, cokers and reactors. Towers, drums and exchangers. Alkylation and desulfurization units. We have the experience you need in and around the petrochemical and refining industry. Let us work with you – THE SMART WAY® – to develop high-performance multiservice solutions to increase safety and productivity.



### **A Commitment to Safety**

In the petrochemical and refining industry, we understand that every job has to start with Environmental Health and Safety (EHS), and we are committed to maintaining and continually improving our safety performance – setting the standard in the industry.

As part of this commitment, we have established the SMARTAcademy to train employees and clients in the best and safest practices, including task, site, environmental, compliance and equipment use. We also have defined 10 Life-Saving Rules and a STOP WORK policy to ensure that every one of our employees understands that they have the authority to intervene and stop work whenever they think an unsafe condition may exist.

Ultimately, we believe that safety drives efficiency and productivity. The equation we like use is: SAFETY + EFFICIENCY = PERFORMANCE + PRODUCTIVITY. The safest company will also deliver the best quality and performance at the lowest total installed cost.

### **Access Without Excess**

When you're focused on safety and quality, while also working to

save time and money, developing an access solution to support increased productivity is key. This is why our approach begins with designated planners, who provide hands-on direction based on years of experience in the petrochemical and refining industry.

Together with our team of licensed civil, structural and mechanical engineers, we design highly-efficient access solutions – THE SMART WAY – with the safest and most advanced products in the industry. Supported by cutting-edge high-definition laser scanning equipment and state-of-the-art, 3-D Computer-Aided Design (CAD) and structural analysis software, our access solutions will provide a solid foundation for your project's safety and success.

### **Insulation Excellence**

With highly trained, skilled craftspeople and years of experience, we also stand ready to deliver high-performance insulation solutions. Our services include:

- Demolition / Installation
- Cryogenic Systems
- High Temperature Systems
- Removable Insulation Blankets
- Standing Seam Panels
- Soundproofing and Weatherproofing
- Appraisals

*“Once again, I feel that Safway has done an excellent job, and we should use their services whenever possible.”*

– ConocoPhillips

*"I would like to personally acknowledge your company's strong performance in the area of safety. Your organization was successful in achieving a recordable injury rate below our target. It's apparent that your organization takes safety as seriously as we do here at Sunoco."*

– Sunoco, Inc.

### **Premier Coatings**

We also specialize in the application of high-quality coatings. We have serviced large capital projects and implemented long-term coatings programs. Our services include:

- Abrasive Blasting and Sandblasting
- Industrial Painting and Coatings
- Off Site Blasting and Coating Facilities
- CUI Management (Corrosion Under Insulation)
- Fireproofing Systems
- Asbestos and Lead Abatement
- Asset Management Programs

### **Enhancing Productivity**

Our seamless, multiservice approach goes beyond products and services. It includes a focus on increasing productivity. Our goal is to save time at

every point in the critical path to shorten the overall project schedule and deliver the lowest total cost. We are the industry leader in pay-for-performance contracting across North America.

In addition, we provide experienced project managers and field supervisors to drive the schedule along the critical path, and our exclusive web-based management tool, the Safway Tracking System (STS), gathers the necessary information to generate up-to-the-minute reports about

every aspect of your project. By using STS we can stay on top of key performance indicators and proactively manage costs and schedules.

### **Local Resources**

With more branch locations throughout North America, access to the largest inventory in the industry and locally-based crews and expertise, you can be assured that you will have what you need – when and where you need it – and fast emergency response as well.

Through SMART Safety, Innovation, Planning, Process and Expertise, our people come up with ideas every day – THE SMART WAY – by sharing knowledge and resources. It's who we are. it's how we work. The result? Safe, productive worksites and the lowest total installed cost.



To meet the demands of the petrochemical and refining industry, our products include:

### Systems™ Scaffold

One of the most-used access products in the United States, Systems Scaffold can be configured to fit almost any type of structure and erects easily around circular refining and petrochemical vessels, tanks and storage systems.

### Jig Stand

When temporary support of the head of a cat cracker is needed, we can design and engineer a jig stand to handle the load. Jig stands can accommodate any size structure, quickly erected, dismantled, transported and reused.

### QuikDeck® Suspended Access System

An easy-to-install modular platform, QuikDeck can be assembled from just a few basic components, configured to fit any shape or size, built in the air or on the ground, leapfrogged and relocated as work progresses.

### Personnel & Material Hoists

With lifting speeds ranging up to 298-feet per minute, our hoists can transport as much as 8,000 pounds vertically. A variety of configurations (including dual car capability on one fixed mast) and wide-opening gates ease the handling of large, heavy objects.



### Transport Platforms

Ideal for structures up to 656-feet high, Transport platforms enable the movement of crews and material, with lifting speeds of 40 feet per minute.

### Mast Climbers

Mast climbers can be configured to efficiently transport crews, materials and tools to any position. A lifting speed of 39 feet per minute ensures timely vertical access to heights up to 550 feet, with a lifting capability of up to 10,000 lbs.

### Swing Stages

Highly adaptable and easy to use, swing stages provide solutions for many hard-to-reach spaces.

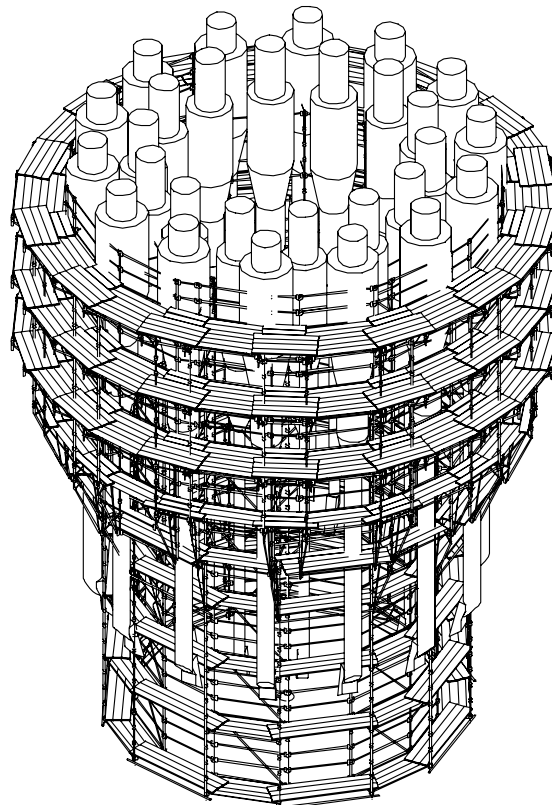
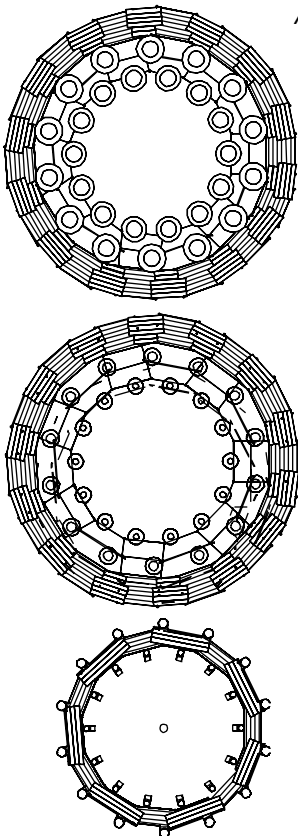
### SafScan™ HD Laser Surveying

By delivering precise three-dimensional (3D) images of existing conditions at any industrial plant or off-shore facility, SafScan improves accuracy, productivity and safety.

### HAKI® Trusses & Protection Systems

Safway is the primary North American supplier of HAKI trusses, designed to span large areas, and HAKI weather protection systems.

*A jig stand engineered with Systems™ Scaffold*



### Safway Group Holding LLC

N19 W24200 Riverwood Drive  
Waukesha, WI 53188

Toll free: (800) 558-4772

Telephone: (262) 523-6500

For a list of branch locations in the United States and Canada, visit our website at [www.safwaygroup.com](http://www.safwaygroup.com).

©2016 Safway Group Holding LLC. All rights reserved.

ORN 950 Rev D 9/16